

VIBS 2019: Explore the World of Garmin Marine Nav Products

Popular Models by
Jeff Cote



Pacific  Yacht Systems
marine electronics & electrical

design • installation • service • support

Passion for Boating



- Systems Design Engineer
- Owner/operator of Pacific Yacht Systems
- NMEA & ABYC certifications
- Published monthly columns
 - Pacific Yachting Magazine: Tech Talk
 - Northwest Yachting Magazine: Hot Wire
- Proud Owner: 36' Sailboat
- Favorite BC cruising grounds are Barkley Sound and the Broughton Archipelago

About Pacific Yacht Systems Inc.



- Specialize in marine electrical and electronics
- Servicing the British Columbia and Western Canada
- Worldwide electrical design / consultation
- 2018 Recap:
 - Completed over 1000 boat projects
 - Designed / consulted on over 100 electrical projects
- Over 150 “How To” PYS Videos on YouTube
- www.pysystems.ca for schematics, design info, published articles, etc...

Navigation Selection Criteria



- Consider your boating preferences
 - Howe Sound vs. Inside Passage
- Start with what you have
- All-in-one vs. multiple displays
- Do you navigate from one or two helms
- Buttons vs. touchscreen



Other Considerations



- Feature-rich vs. simplicity
- iPad / Smartphone integration
- Electrical system capacity
- Brand specific advantages

PYS Preferred Choice



GARMIN™

Garmin Specific Advantages



- Easy to use
- Reliable
- Good integration: NMEA 2000 & NMEA 0183
- Large product selection
- Great value

Garmin Suite



Garmin Possibilities



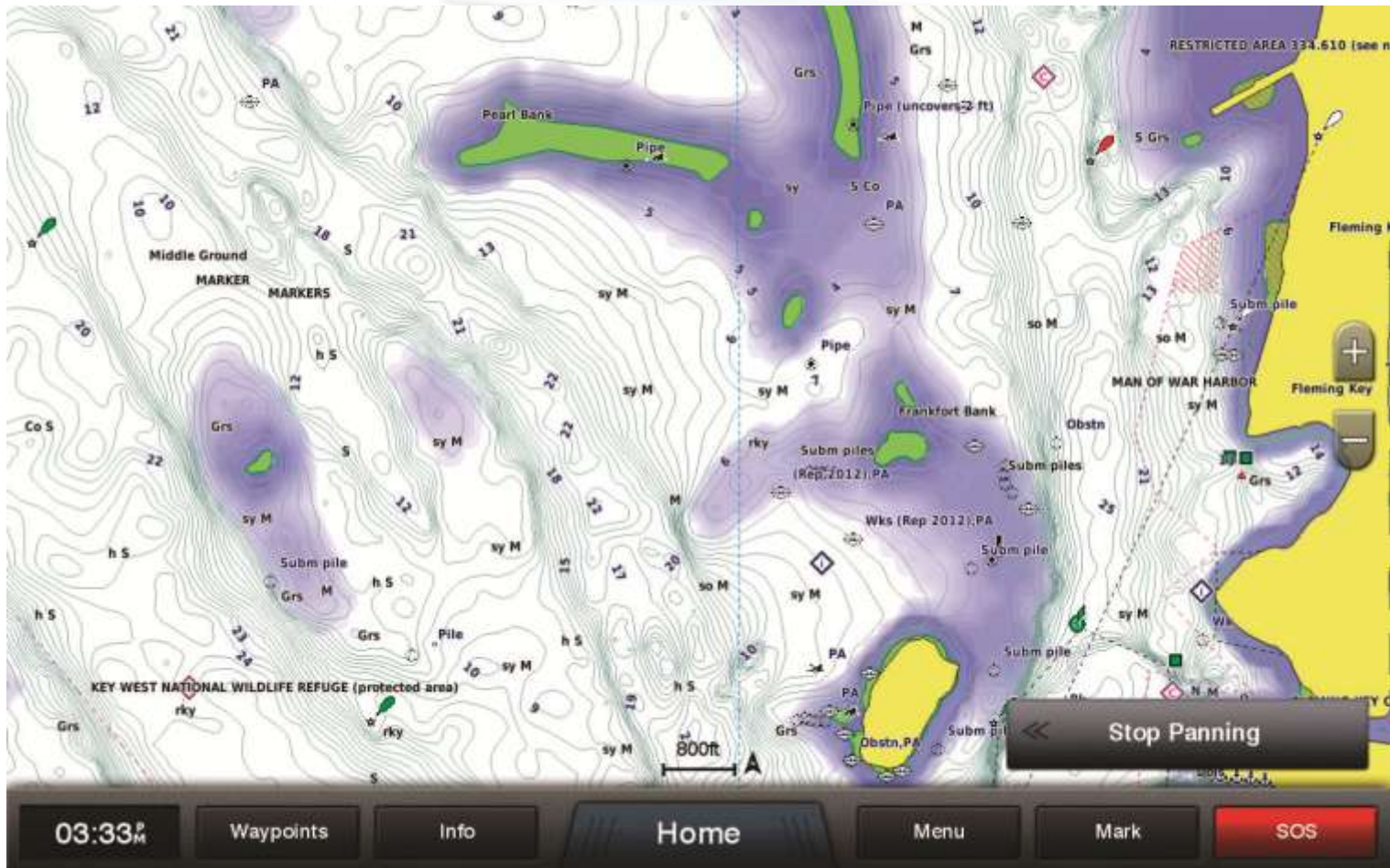
- Chartplotter & MFD
- Sonar
- Radar
- Autopilot
- VHF/AIS
- Cameras
- Instruments & sensors
- Digital switching (e.g. CZone)
- FLIR cameras
- FUSION-Link

Chartplotter (MFD)



- Chartplotter only vs. Multi-Function Display (MFD)
- Garmin Bluecharts G3
- Screen size
- Buttons vs. touch-screen
- Built-in Wi-Fi
- ActiveCaptain app

Garmin Bluecharts G3



Garmin Nomenclature



- World Basemap vs Bluecharts
- Garmin Network Port

Sounder

- cv: ClearVü & Traditional Chirp
- sv: SideVü, ClearVü & Traditional Chirp
- xs: ClearVü & Traditional Chirp
- xsv: SideVü, ClearVü and Traditional

echoMAP Plus



- Best value chartplotter / sounder
- Buttons: 6"
- Touch w/ Key Assist: 7", 9"
- Sounder: cv & sv
- Garmin Panoptix ports
 - 0: 6x
 - 1: 7x / 9x
- NMEA 2000
- NMEA 0183 ports: 1
- No radar



echoMAP Plus 97sv



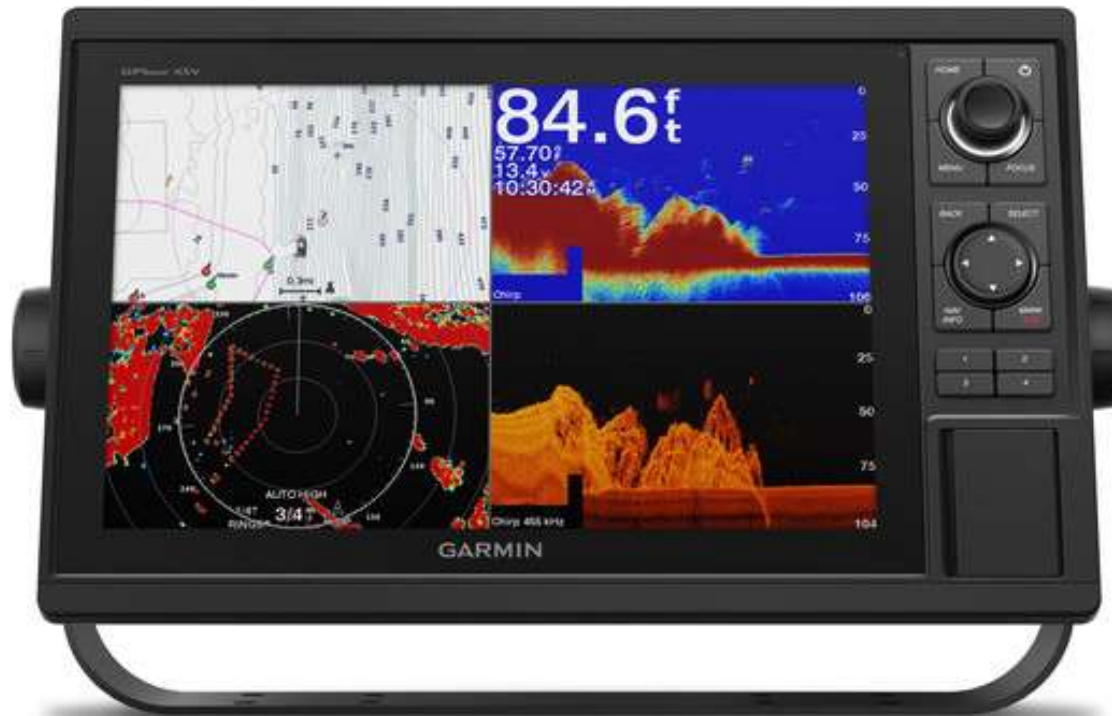
GPSMAP 10xx / 12xx



- Keypad interface & multifunction control knob
- Displays: 10" & 12"
- Garmin network ports: 2
 - E.g.: Radar & MFD
- NMEA 2000
- NMEA 0183 ports: 1



GPSMAP 1242xsv



GPSMAP 7xx / 9xx / 12xx Touch



- Best value for touch
- Displays: 7", 9", 12"
- Garmin network ports
 - 1: 7xx / 9xx
 - 2: 12xx
- NMEA 2000
- NMEA 0183 ports: 1



GPSMAP 1222 Touch



GPSMAP 84xx / 86xx



- Glass bridge look
 - flagship line
- Displays: 10", 12", 16"
 - Optional xsv
- Displays: 17", 22", 24"
- Garmin network ports: 2
- NMEA 2000
- NMEA 0183 ports: 1



GPSMAP 8424



ActiveCaptain App



- Access charts and maps anywhere
- ActiveCaptain community
- Mobile quickdraw community
- Simple syncing
- Updates from the App
- Control your chartplotter
 - GPSMAP
- Stay connected

Built-in SailAssist Features



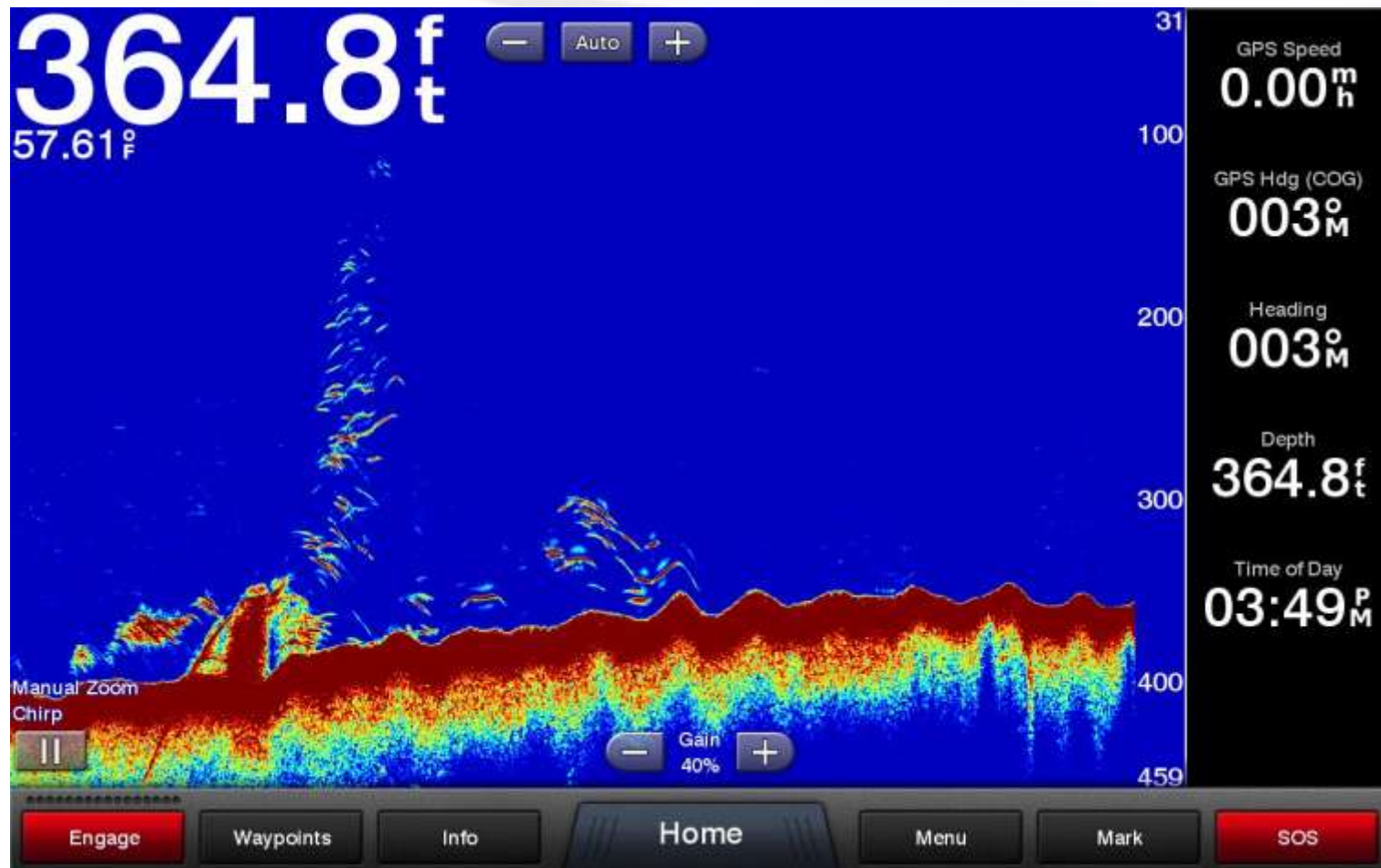
- Pre-race guidance page (virtual starting line)
- Synchronized info: laylines, time to burn, race timer
- Enhanced wind rose,
- Heading and course-over-ground lines
- Set and drift
- True and apparent wind data

Traditional CHIRP Sonar



- CHIRP sonar sweeps a continuous range of frequencies
 - from low to high, in a single transmission
- Returns from each frequency
- CHIRP sonar is able to create a **clear, high-resolution image.**

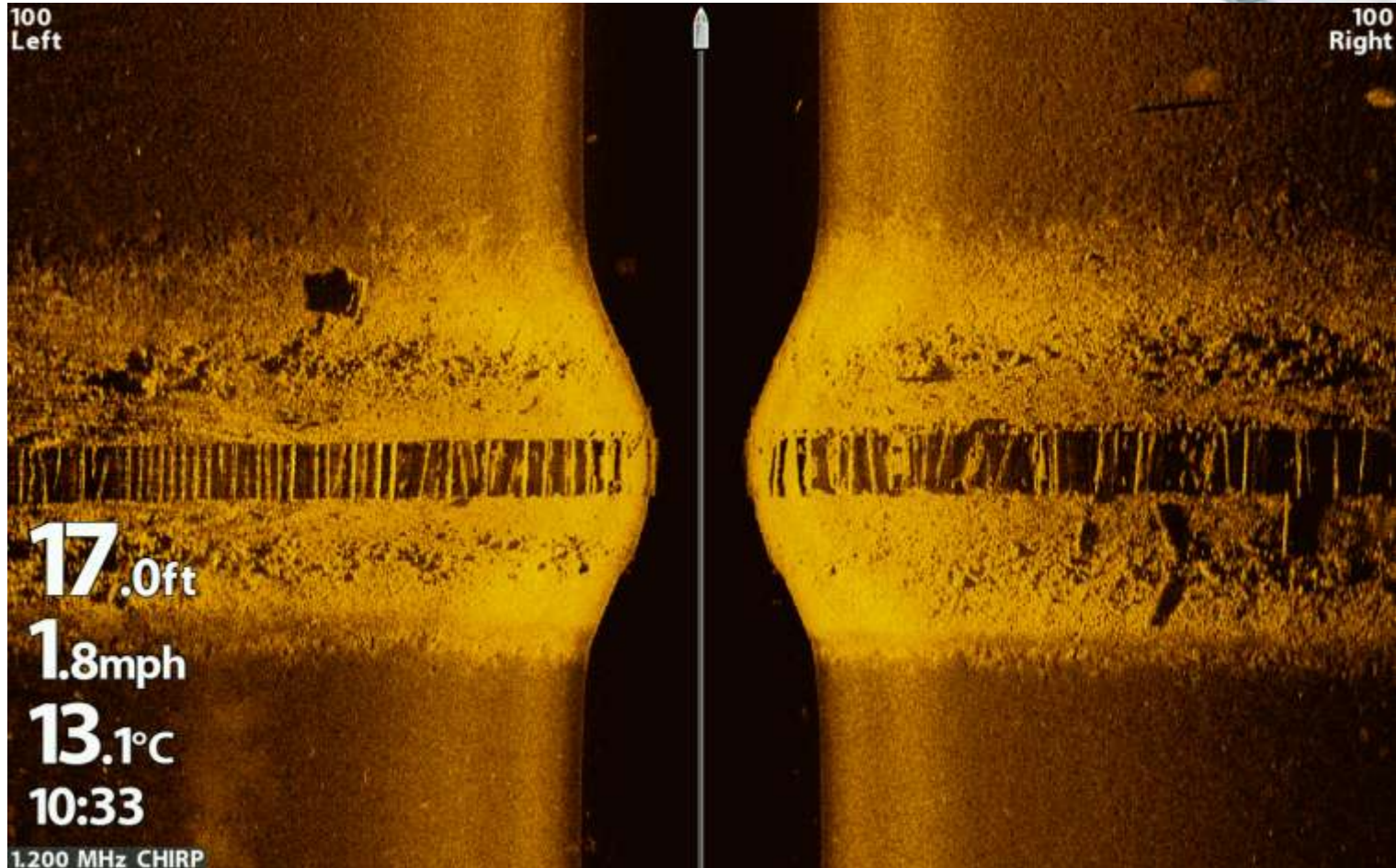
Traditional CHIRP Sonar



ClearVü CHIRP Sonar



SideVü CHIRP Sonar



Black Box Sonar Module



- GSD 25 Premium
 - 1 kW dual-channel CHIRP sonar clearVu & downVu
- GSD 26 Chirp Professional
 - Up to 3kW

GSD 25



GSD 26

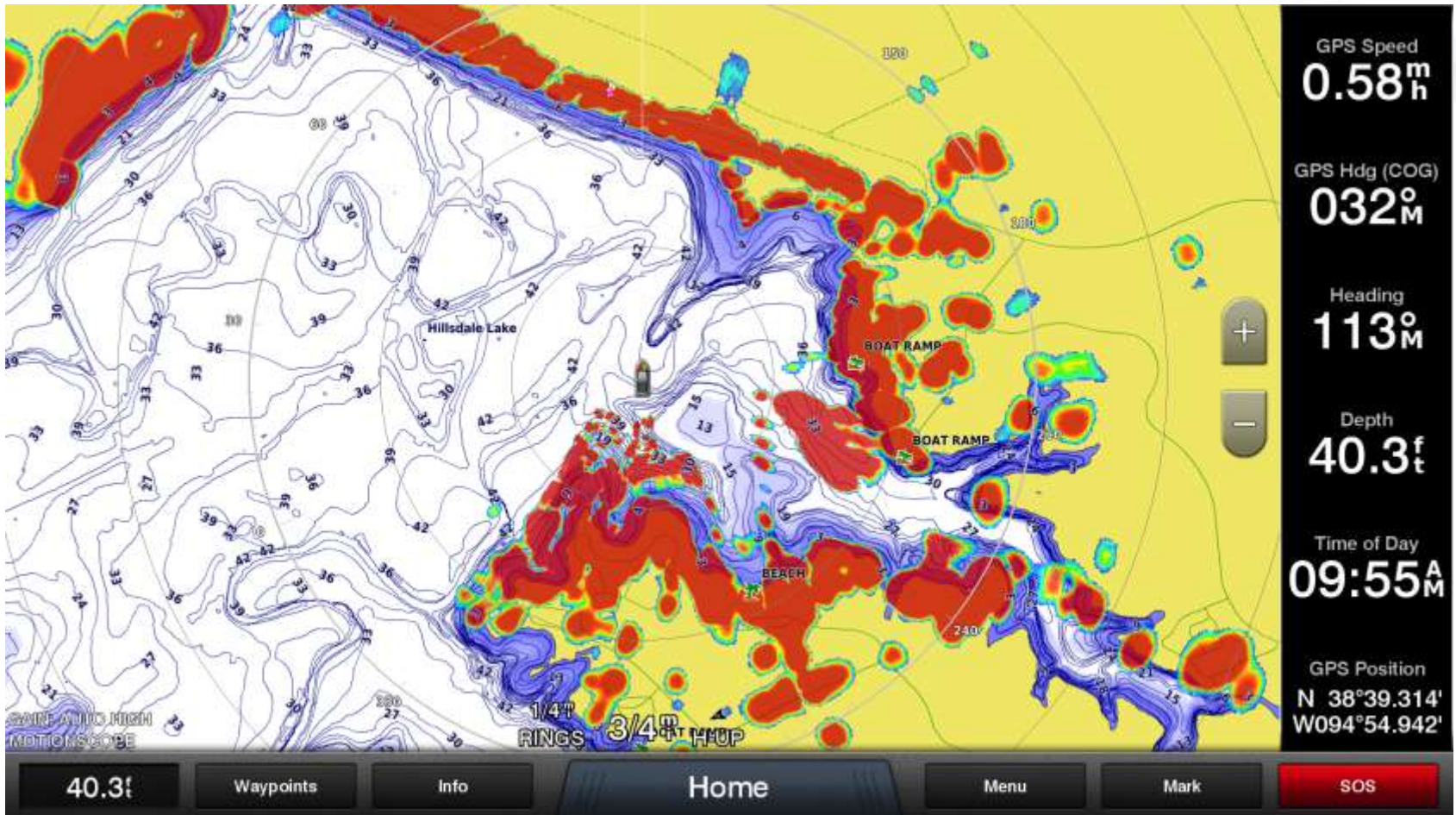


Why Radar?

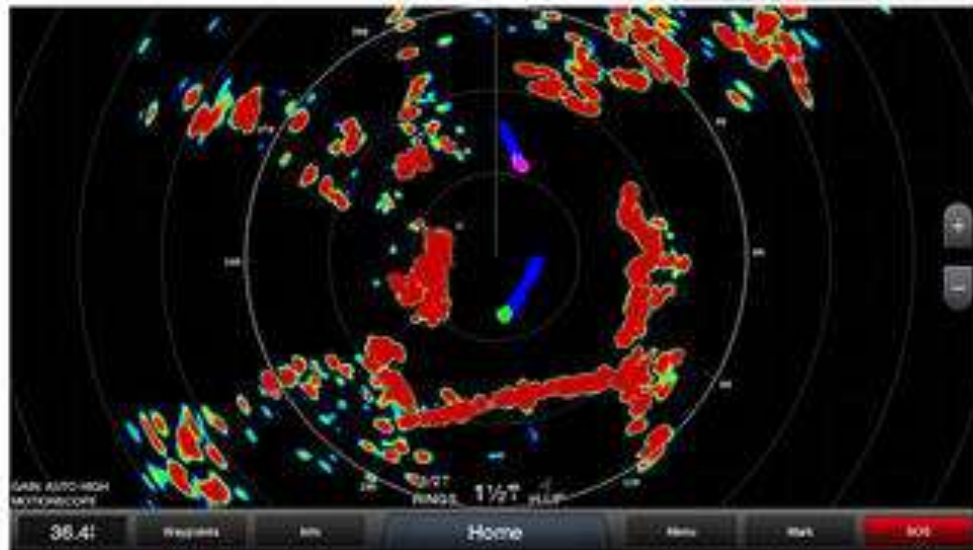


- Ability to “see” boats and land in low visibility
 - Great for fog, night, and positional awareness
 - Track boat movements
- Line of sight only
 - Cannot see around corners
- Range Varies

Radar Overlay Image



Radome Radar



Open-Array Radar



Garmin Marine Radar Features



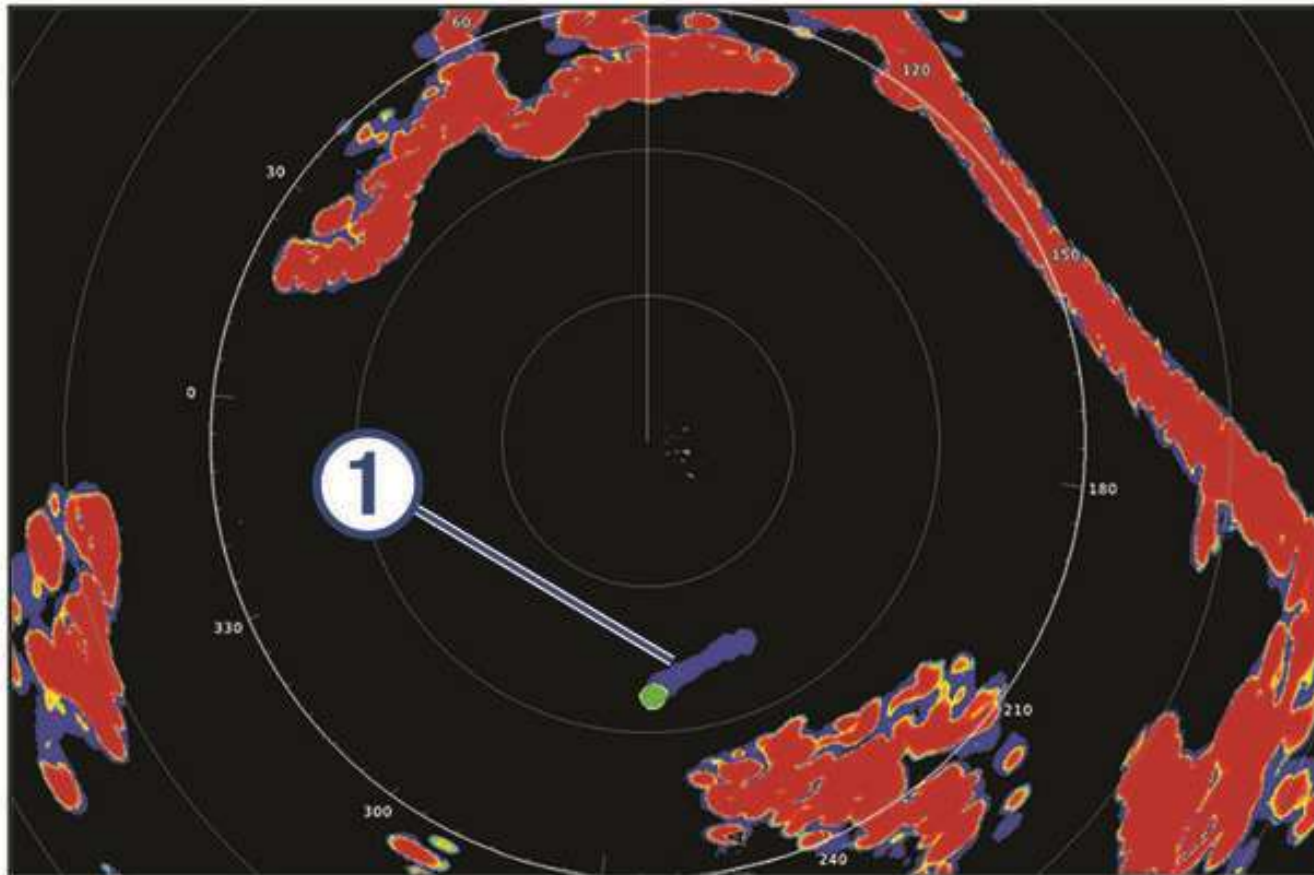
- Radome size: 18", 24"
 - 4 kW
- Open Array size: 4', 6'
 - 6 kW, 12 kW, 25 kW
- HD+, xHD
- Fathom
 - 40 W, 50 W, 120 W

Fathom Radar



- Safer operation
- MotionScope
 - detect and highlight targets moving toward you or away from you
- Echo Trails
- Dual Range
 - shows close and long range split screen images at the same time, using a single antenna

Garmin Echo Trails



Popular GMRs



- GMR 18 HD+, 18 xHD, Fathom 18 & 24
- GMR™ 424 xHD2



AIS Benefits



- Displays surrounding traffic
 - See local commercial traffic
 - Plan a narrow passage or bridge
 - Hail other vessel by name
- Receive-only vs transmit & receive
- Collision alarm

Garmin AIS 800



- 5 watts of transmit power with Class B SO
- Built-in GPS with connector for optional external antenna
- NMEA 2000[®] connectivity
- Internal VHF antenna splitter

Garmin 215 VHF



- Built-in GPS for DSC
- Optional AIS model
- Integration
 - NMEA 2000
 - NMEA 0183

Garmin 315 VHF



Autopilot Benefits



- “2nd Hands” to steer boat
 - Steady track (save fuel)
 - Offset current and wind
 - Emergency help
- Steer boat to
 - Heading
 - Waypoint
 - Route

Garmin Autopilot Models



- Compact Reactor vs Reactor
- Drive: hydraulic, mechanical, retrofit, solenoid, steer-by-wire
- Control head: GHC 20
- Garmin benefits:
 - Shadow drive
 - SmartPump V2



Compact Reactor™ 40 Hydraulic Autopilot with GHC™ 20



Reactor™ 40 Hydraulic Corepack with SmartPump v2



GC 200 Marine IP Camera



- Monitoring
 - e.g: engine room, lower helm, dinghy-tow, dockview
- Navigation
 - thermal night vision for travelling in low light conditions
- Security
 - galley or engine room and access it remotely through your smartphone



Garmin GMI Wired Start Pack 52



GNX™ Wireless Sail Pack 52



GRID 20 (Garmin Remote Input Device)



Wireless Remote Control



Connect with PYS



- PYS Electrical Orientation for your boat
 - 90 mins: Batteries, DC distribution, charger, alternator, inverter
- PYS Design Services for DIYers
 - Electrical system designed by PYS (collaborative and to marine code)
 - Installed by yourself or other outfit
- Pacific Yachting magazine - Monthly Tech Talk Column
- Northwest Yachting – Monthly Hot Wire
- YouTube – 500K Views
- www.pysystems.ca 1000s of articles
- Monthly email newsletter



Questions?

Marine Electronics

Full service shop delivering
marine electrical and navigation
solutions tailored to your vessel
and boating needs

Pacific  Yacht Systems
marine electronics & electrical

design • installation • service • support